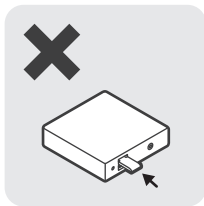


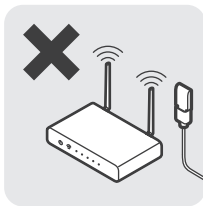
Read this first!!

To avoid interference, Home Assistant Connect ZBT-1 **must be connected** to your Home Assistant device with the USB extension cable, and placed away from 2.4 GHz WiFi devices, routers, SBCs such as Raspberry Pis, external hard drives, SSDs, and any USB ports.

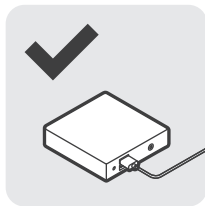
Do not plug directly into your smart home hub.



Do not place next to a router or any 2.4 GHz WiFi devices.



Use the extension cable to connect the ZBT-1 as far as possible.



For more information about getting started, visit go.nabucasa.com/zbt-1

Thanks for supporting the Home Assistant project!

